



BrokerSystems

iTrader Elite User Manual

1. INTRODUCTION.....	3
1.1 USER LOGIN	3
2. USER INTERFACE “TRADING”	5
2.1 OVERVIEW	5
2.2 ORDER TICKET WINDOW.....	6
2.2.1 Limit Order	6
2.2.2 Enhance Limit Order.....	9
2.2.3 Auction Order	10
2.2.4 Auction Limit Order	11
2.2.5 Special Limit Order.....	12
2.3 PORTFOLIO AND ACCOUNT BALANCE WINDOW	13
2.3.1 Portfolio Window	13
2.3.2 Account Balance Window.....	14
2.4 MARKET QUOTE WINDOW AND ORDER BOOK	16
2.4.1 Market Data Window	16
2.4.2 Order Book.....	16
2.4.3 Cash Book	21
2.4.4 Order History	21
2.4.5 Transaction History	22
2.5 CHANGE ACCOUNT INFO.....	22
2.6 USER SETTING	23
2.6.1 Language	23
2.6.2 Risk Disclosure	23
2.6.3 Color Style	23
2.7 USER INFORMATION	24
2.8 LOG OUT.....	25
3. USER INTERFACE “ASSET”	26
4. USEFUL TIPS	26
5. LEVEL OF SECURITY	26

1. Introduction

The iTrader Elite program is a comprehensive all-in-one trading tool which enables a user to view real-time stock information; place, cancel, and change orders; monitor order status; check the account balance.

1.1 User login

- a. Open up Internet Explorer, the Login window will pop up (Fig.1.1) .

In the login page, user can easy access website information at the footer, e.g. Disclaimer, Privacy

- b. If correct user name and password is typed, click on “Login” to continue.
- c. And then you will receive the OTP (one-time-password) in your SMS inbox, input the verified code and press “Continue” to go on. The verified code will be expired after 6 minutes. If you can’t receive the code, please contact your broker directly. (Fig 1.2)
- d. After the successful login, Announcement page will display and click Close to enter the All-in-one Interface (Fig.1.3, Fig.1.4)

Fig. 1.1 Login Window



Security Login

username

password

Account will be suspended temporarily if you input the incorrect password three times.

Login

For details regarding eBroker Systems Limited's iTrader operation, please read through our user manual.
Supported Browsers: Chrome50, IE11, Edge, Firefox49, Safari9, Opera15, or above.

In order to protect the security of our customer's account information, your Internet account will be suspended temporarily if input incorrect password three times. Please kindly contact our customer service (852) 3911 8211 to reactivate your account. It is also advised to change the password regularly to protect your account. Also, if login without placing order for 30 minutes, system would logoff automatically to prevent being used by other person.

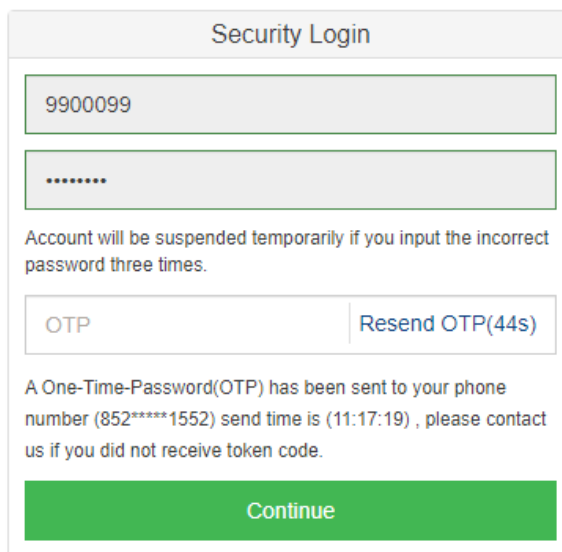
If you have any enquiry about your securities trading, please contact us by telephone (852) 3911 8211 or email.Or call our dealing hotline at 3911 8222.

简 繁 EN 1.4.5

[Disclaimer](#) [Privacy](#)

Copyright c 2000 - 2017 eBroker Systems Ltd. All rights reserved.

Fig. 1.2 Login Window (OTP input)



The Security Login window contains the following elements:

- Title:** Security Login
- Input Fields:** Two text boxes. The first contains the number "9900099". The second contains seven dots ".....".
- Warning:** "Account will be suspended temporarily if you input the incorrect password three times."
- OTP Field:** A text box labeled "OTP".
- Resend Link:** A blue link labeled "Resend OTP(44s)".
- Message:** "A One-Time-Password(OTP) has been sent to your phone number (852*****1552) send time is (11:17:19) , please contact us if you did not receive token code."
- Continue Button:** A large green button labeled "Continue".

Fig. 1.3 Announcement



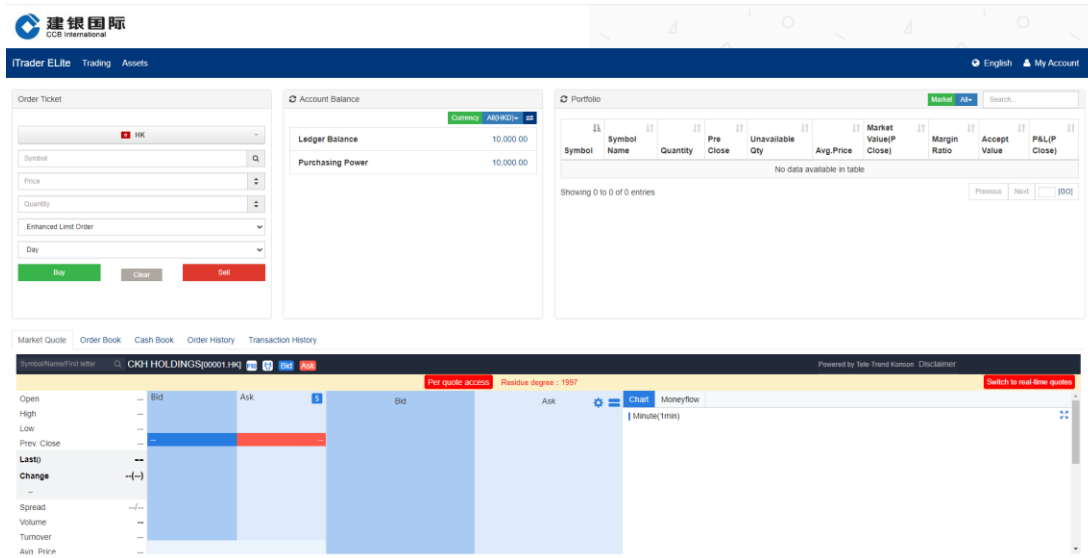
The Announcement window features a blue header bar with the title "Announcement" and a close icon. The main content area contains the following text and list:

Investors should also be mindful of the associated security threats and risks when conducting transactions through online platforms:

- Set a strong password and properly safeguard their login ID and password;
- Closely monitor their online accounts by reviewing trade confirmations;
- Type the website address (URL) or use a bookmark to enter the broker's website;
- Ensure the security of computer/mobile devices used for online trading by installing anti-virus programs and updating them regularly;
- Not use public computers or unknown and unsecure networks to access their online accounts.

A blue "Close" button is located in the bottom right corner.

Fig. 1.4 “Trading” Interface



Login Window

Correct user name and password must be typed in. If an incorrect user name or password is typed, error message will popup. Click “Confirm” to type in the correct user name and password again. For three consecutive input of wrong user name or password, your account will be suspended. You will then have to call the customer hotline to re-activate the account.

2. User interface “Trading”

2.1 Overview

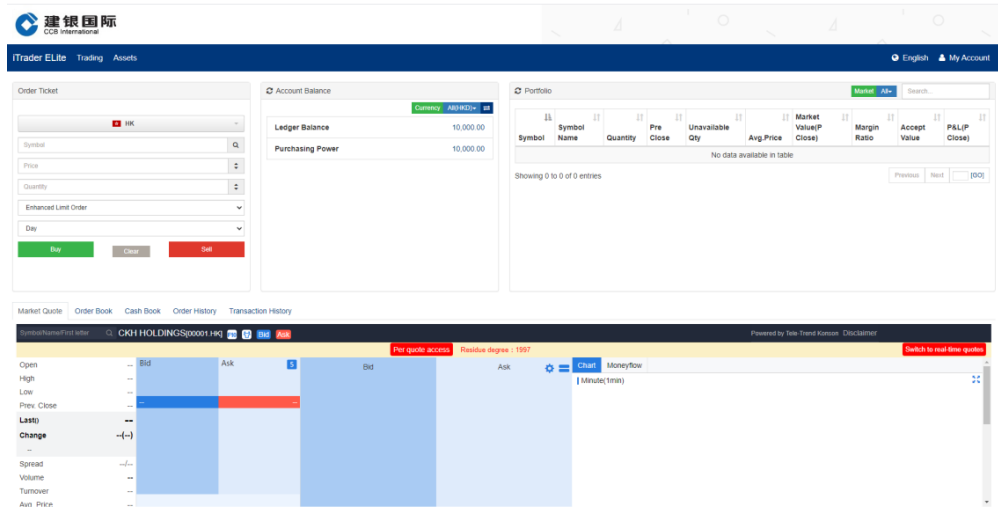
After the successful login, the “Trading” Interface will pop up automatically (Fig. 2.1) .

The “Trading” Interface contains 3 sections:

1. Order Ticket Window
2. Account Balance Window
3. Portfolio
4. Market Quote and Order Book

(Please contact your brokerage with market data package subscription)

Fig. 2.1 “Trading” Interface



2.2 Order Ticket Window

iTrader provides Buy/Sell shortcut key to speed up placing orders. User press [B] for buy or [S] for sell, orders can be placed directly.

2.2.1 Limit Order

1. To place order, select trading market, enter the stock symbol, the quantity and the price. Then, press the Buy or Sell button according to order type (Fig. 2.2).
2. A confirmation box will pop up and press “Confirm” to send out. if “Close” is pressed, the order would not be placed. If the order is placed successfully, the order sent confirmation message will pop up (Fig. 2.4) and the order detail will then be displayed in the order book.

Before input symbol code, you can click search button and then search it from search form.

3. For user to make a clear view of the transaction details are shown in the order confirmation box.

Fig. 2.2 Order Ticket

Order Ticket

CHEUNG KONG

★ HK

00001

HKD

Q

100.7

↕

1000

Lot Size: 1,000

↕

Max Buy: 0

Max Sell: 0

Limit Order

Day

Buy

Clear

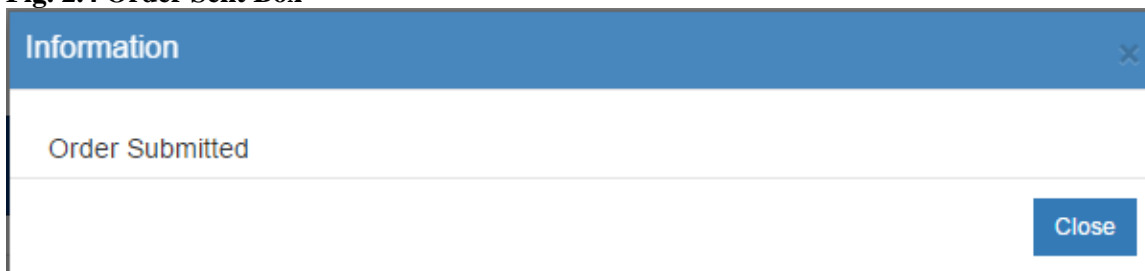
Sell

Fig. 2.3 Confirm Order Box

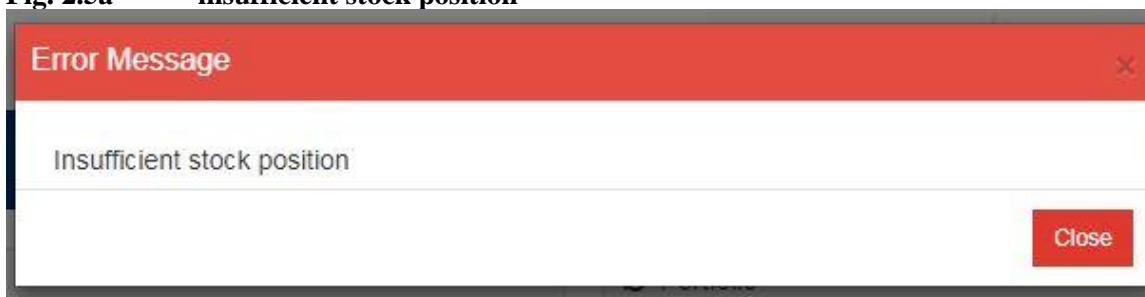
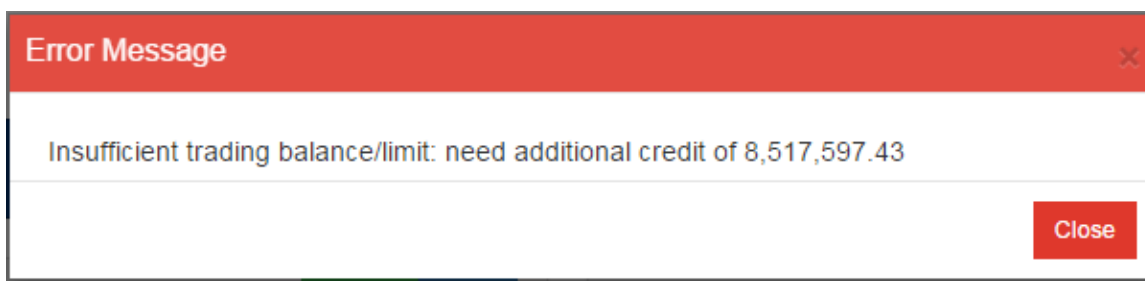
Order Confirmation - 1005552-0001 ✕

Order Information			
Symbol	00001		
Symbol Name	CHEUNG KONG		
Price	100.7 (HKD)		
Quantity	1,000		
Buy/Sell	Buy		
Order Type	Limit Order (Day)		
Commission And Fees			
Commission	100.70 (HKD)	CCASS Settlement	0.00 (HKD)
Stamp Duty	101.00 (HKD)	Transaction Levy	7.75 (HKD)
Trading Fee	0.00 (HKD)		
<div>Transaction Cost: 108.75 (HKD)</div> <div>Commission: 100.70 (HKD)</div> <div>Order Amount: 100,700.00 (HKD)</div> <div>Total Amount: 100,909.45 (HKD)</div>			
		Submit	Close

The currency will be shown after “Price”.

Fig. 2.4 Order Sent Box**Over the Limit Orders**

If the order exceeds the credit limit, price limit or stock position, a message dialog box will pop up. This order will not be accepted and not be shown in the order book. (Fig. 2.5a and Fig. 2.5b)

Fig. 2.5a insufficient stock position**Fig.2.5b Insufficient trading balance****2.2.2 Enhance Limit Order**

Enhance limit order will show with specific entitlement. It is similar to a Limit Order except that it will allow matching of up to 10 price queues (i.e. the best price queue and up to the 10th queue at nine spreads away) at one time provided that the traded price is not worse than the input price.

Fig.2.6 Enhance Limit Order

Order Ticket

CHEUNG KONG

★ HK

00001

HKD

Q

100.9

↕

2000

Lot Size: 1,000

↕

Max Buy: 99,108,027,750,000

Max Sell: 0

Enhanced Limit Order

▼

Day

▼

Buy

Clear

Sell

2.2.3 Auction Order

The Auction order type will show with specific entitlement (Fig.2.7). Type in the symbol, and quantity, price will be auto change to 0 by choosing the auction order type, and auction order will be placed after clicking on the Buy/ Sell button. Auction order can only be placed during Auction period.

Fig. 2.7 Auction Order

Order Ticket

CHEUNG KONG

★ HK

00001

HKD

Q

0

▲▼

1000

Lot Size: 1,000

▲▼

Max Buy:

Max Sell: 0

Auction Order

Day

Buy

Clear

Sell

2.2.4 Auction Limit Order

The Auction Limit order type will show with specific entitlement (Fig.2.8). It is auction order with specific price. It can only be placed during Auction period.

Fig. 2.8 Auction Limit Order

Order Ticket

CHEUNG KONG

★ HK

00001

HKD

Q

100.9

↕

2000

Lot Size: 1,000

↕

Max Buy: 99,108,027,750,000

Max Sell: 0

Auction Limit Order

Day

Buy

Clear

Sell

2.2.5 Special Limit Order

It is same as FAK. When parts of the quantity are matched with market, either way the order will be sent to exchange and rest of the quantity will be canceled.

Fig. 2.9 Special Limit Order

2.3 Portfolio and Account Balance Window

2.3.1 Portfolio Window

The [Portfolio] window shows the account's portfolio in all markets (Fig.2.11).

Portfolio's market value can be calculated either with Pre-close price or Nominal by broker's setting. The average price of the portfolio is also shown for reference.

The symbol and quantity will copy into the Order Ticket while clicking the symbol in the portfolio window. The symbol name will be show completely when mouse move over.

Fig. 2.10 Portfolio

Portfolio Market All <input type="text" value="Search..."/>										
Symbol	Symbol Name	Quantity	Pre Close	Unavailable Qty	Avg.Price	Market Value(P Close)	Margin Ratio	Accept Value	P&L(P Close)	
★ 00388	HKEX	100	175.2		178.90	14,930.00	0%	N/A	-2,960.00	
★ 01288	ABC	2,000	3.21		3.980	7,100.00	0%	N/A	-860.00	
★ 01299	AIA	2,000	42.45		45.235	88,100.00	0%	N/A	-2,370.00	
★ 01398	ICBC	24,855	12.14		5.570	320,629.50	0%	N/A	182,187.15	
01618		1,000	0		1.55	0.00	0%	N/A	-1,550.00	
★ 01766	CRRC	1,000	90.00		7.200	91,000.00	0%	N/A	83,800.00	
02468		1,000	0		0.63	0.00	0%	N/A	-630.00	

Showing 1 to 7 of 9 entries

Previous 1 2 Next

- Input a specific Symbol, press ENTER key to start the filtering, for Hong Kong Stock, the system will auto pad “0” for integer string to complete the symbol code (eg. Enter 5 for 00005).
- Select “All” or specific Market from the dropdown list and portfolio for will be shown.
- Click the page number at the bottom to go to the specified page.

Fig. 2.11 Portfolio Detail

Portfolio Market All <input type="text" value="Search..."/>										
Symbol	Symbol Name	Quantity	Pre Close	Unavailable Qty	Avg.Price	Market Value(P Close)	Margin Ratio	Accept Value	P&L(P Close)	
★ 00388	HKEX	100	175.2		178.90	14,930.00	0%	N/A	-2,960.00	
★ 01288	ABC	2,000	3.21		3.980	7,100.00	0%	N/A	-860.00	
★ 01299	AIA	2,000	42.45		45.235	88,100.00	0%	N/A	-2,370.00	
★ 01398	ICBC	24,855	12.14		5.570	320,629.50	0%	N/A	182,187.15	
01618		1,000	0		1.55	0.00	0%	N/A	-1,550.00	
★ 01766	CRRC	1,000	90.00		7.200	91,000.00	0%	N/A	83,800.00	
02468		1,000	0		0.63	0.00	0%	N/A	-630.00	

Showing 1 to 7 of 9 entries

Previous 1 2 Next

2.3.2 Account Balance Window

The following information will be shown in the [Account Balance] window (Fig.2.11).

All information will be shown:

Ledge Balance (by currency)

Purchasing Power (by currency)

Fig. 2.12 Account Balance

Account Balance	
Currency All(HKD)	
Ledger Balance	10,000.00
Purchasing Power	10,000.00

Click on to enquire exchange rate.

Fig.2.13 Exchange Rate

Exchange Ratio	
Currency	Exchange Ratio
HKD	1.000000
BEF	0.001000
CAD	6.195471
VND	1,000.000000
EUR	9.306084
TWD	0.001000
THB	1,000.000000
KRW	0.006940
.IPY	0.070825

The information is indicative only and is provided solely for reference purposes.

2.4 Market Quote Window and Order Book

2.4.1 Market Data Window

The real time market quote will be displayed in [Market Quote] window. Please contact your brokerage with market data package subscription.

Fig. 2.14 Market Quote



2.4.2 Order Book

Order book lists out Today's order information, and allows print order book with [Print] button.

There are different sections in the [Order Book] for orders(Fig.2.13):

Fig. 2.15 Order Book

Date (Date Time of HK)/Order Number / Buy/Sell /Symbol/Currency/ Price/ Avg Price / Quantity /Filled Qty/ Queue Qty/ Status / Source/ Options / Remarks

Order Book														
Status: All														
Date	Order Number	Buy/Sell	Symbol	Currency	Price	Avg Price	Quantity	Filled Qty	Queue Qty	Status	Source	Options	Remark	
02-25 00:00:00	160831000010	Buy	IBM US	USD	160.00	0.000	100	0	100	Queue	I			
15:59:05	160831000006	Buy	00001	HKD	99.00	99.000	500	500	0	Comp	I			
14:51:48	160831000002	Buy	00001	HKD	98.80	98.800	500	500	0	Comp	I			
03-05 00:00:00	160831000001	Buy	00001	HKD	59.00	0.00	500	0	0	Reje	I		Bid is below market by 40% [Auto] Reject!	
09:00:00	160830000007	Buy	IBM US	USD	160.00	0.000	1	0	1	Queue	I			

Showing 1 to 5 of 5 entries

Columns Definition

Date (Date Time of HK)

The time order placed.

Order Number

This is a reference no. generated by the system. Quote and refer to this number for any queries.

Click on the order number to show order details as below:

Fig. 2.16 Order Details

Order Detail - C800023			
Date	02-25 00:00:00		
Order Number	160831000010		
Symbol	IBM.US		
Symbol Name	INTL BUSINESS MACHINES CORP		
Price	160.00	Avg Price	0.000
Quantity	100	Filled Qty	0
Buy/Sell	Buy		
Order Type	Limit Order (Day)		
Status	Queu		

Close

Buy/Sell

Buy or Sell Order

Symbol

The stock symbol of the order

Price

The order price

Avg Price

The order's average filled price

Quantity

Order quantity

Filled Quantity

If this is a partial complete order, this column will show the quantity filled.

Queue Quantity

Queuing quantity on the exchange.

Status

Orders will have one of the following statuses. For orders with a Pending status for a long

time or Inactivate status, cancel the order and call the customer hotline if there is any query

Status	Full Name	Description
Comp	Complete	Order wholly Completed
Pend	Pending	Order stored in the system and not yet sent to the Exchange
Part	Partial	Order Partially Completed
Queu	Queue	Order queuing in the Exchange
Inac	Inactive	Order pending in the system and requires approval
Canc	Cancel	Order Cancelled
Reje	Reject	Order Rejected
Conf	Confirmed	Order completed and confirmed

Options

Information for order type. For limit order, it will be blank in this column.

Remarks

Reason for order rejection will be shown. (all rejected orders will be highlighted in red)

2.4.2.1 Change Order


1. Select the incomplete order and click < Change > button . The change order box will pop up(Fig. 2.17).
2. Type in the new quantity and price.
3. Click <Submit> to submit the change

Fig.2.17 Change Order

Change Order Confirmation - C800023

Order Information			
Order Number	160831000010		
Symbol	IBM.US		
Symbol Name	INTL BUSINESS MACHINES CORP		
Price	160.00 (USD)	Change To	160.00
Quantity	100	Change To	100
Buy/Sell	Buy		
Order Type	Limit Order (Day)		

Submit
Close

The currency according to order symbol will be shown after “Price” ,“Avg Price”.

Enter the change item, can be either price or quantity and press Submit to confirm the change. The New Price or Quantity can be left blank if there is no change required.

2.4.2.2 Cancel Order


1. Select the incomplete order and click < Cancel > button  , then the cancel box will pop up.(Fig 2.18)
2. Choose < Submit > to proceed.

Fig. 2.18 Cancel Order

Cancel Order Confirmation - C800023
✕

Order Information

Order Number	160831000010
Symbol	IBM.US
Symbol Name	INTL BUSINESS MACHINES CORP
Price	160.00 (USD)
Quantity	100
Buy/Sell	Buy
Order Type	Limit Order (Day)

Submit
Close

2.4.2.3 Order Detail

Click on the Completed order (Fig 2.19) to pop up Order Detail with trade details (Fig 2.20).

Fig 2.19 Order Book

Order Book Cash Book Order History Transaction History														
Status: All		Search...												
Amend	Cancel	Date	Order Number	Buy/Sell	Symbol	Currency	Price	Avg Price	Quantity	Filled Qty	Queue Qty	Status	Source	Options
		01-31 10:20:02	180131000001	Buy	00001	HKD	100.6	0	1,000	0	0	Pend	I	
		01-30 14:42:48	180130000001	Buy	00001	HKD	100.7	0	1,000	0	0	Reje	I	
		01-29 10:47:08	180129000001	Buy	00005	HKD	10.00	0	400	0	0	Canc	I	Enhanced Limit Order;
		01-23 09:07:06	180123000002	Sell	01398	HKD	12.14	12.200	1,000	1,000	0	Comp	D	Enhanced Limit Order;
		01-23 09:06:21	180123000001	Buy	01398	HKD	12.14	0	1,000	0	0	Canc	D	Enhanced Limit Order;
		01-18 14:58:25	180118000003	Buy	01766	HKD	7.96	0	1,000	0	0	Reje	I	Enhanced Limit Order;
		01-18 14:49:59	180118000002	Buy	01288	HKD	4.42	3.560	1,000	1,000	0	Comp	I	

Showing 1 to 7 of 7 entries

Previous 1 Next [GO]

Fig 2.20 Order Detail

Order Detail - C002 ✕

Date	01-11 11:34:12		
Order Number	170111000002		
Symbol	00005		
Symbol Name	HSBC HOLDINGS		
Price	65.00	Avg Price	63.100
Quantity	800	Filled Qty	800
Buy/Sell	Buy		
Order Type	Limit Order (Day)		
Status	Comp		

Trade No.	Price	Quantity	Execution Time
OT.0000000000001	63.10	800	11:34:12

2.4.2.4 Order book Filter

Select the desired status (All, Canc, Comp, Queu, Part, Reje, Pend, Inac, Conf) using the order status filter and click on the <Go> button to display on the orders with the selected order status.

Fig. 2.21 Order Book Filter

Market Quote | **Order Book** | Cash Book | Order History | Transaction History
Search...

Status

All

Pend

Part

Comp

Canc

Inac

Conf

Queu

Reje

Date	Order Number	Buy/Sell	Symbol	Currency	Price	Avg Price	Quantity	Filled Qty	Queue Qty	Status	Source	Options
11-18 14:58:25	180118000003	Buy	01766	HKD	7.96	0	1,000	0	0	Pend	IDC2	Enhanced Limit Order,
11-18 14:49:59	180118000002	Buy	01288	HKD	4.42	3.560	1,000	1,000	0	Comp	IDC2	

Previous 1 Next [GO]

Disclaimer Privacy Risk Disclosure
Copyright © 2000 - 2017 eBroker Systems Ltd. All rights reserved.

2.4.3 Cash Book

It will display cash flow in the account.

Fig. 2.22 Cash Book

Date	Order Number	Account	Deposit/Withdraw	Currency	Amount	Status
01-18 14:24:39	180118000001	1005552-0001	Deposit	HKD	10,000,000,000,000.00	Comp

Showing 1 to 1 of 1 entries Previous 1 Next [GO]

2.4.4 Order History

Display the order history in 2 days/ 7 days / 14 days, pressing [Print] to print out order

eBroker Systems Ltd Copyright 2021

21

history for keeping records. (Fig. 2.23) User can also select to show orders of a preset status.

Fig. 2.23 Order History

Date	Order Number	Account	Buy/Sell	Symbol	Symbol Name	Currency	Price	Avg Price	Quantity	Filled Qty	Status
01-17 16:34:34	180117000003	1005552-0001	Deposit	HKD		HKD	1,000,000,000.00	1,000,000,000.00	1	1	Comp

Showing 1 to 1 of 1 entries

Previous 1 Next [GO]

2.4.5 Transaction History

Display the transaction history of specific date range, pressing [Query] to query transaction history. (Fig. 2.24) User can also select to show transactions of a preset action type (client trades, money voucher, stock voucher).

Fig. 2.24 Transaction History

Transaction Date	Settlement Date	Action	Exchange	Symbol	Quantity	Price	Principal	Charges	Credit/Debit	Description
No data available in table										

Showing 0 to 0 of 0 entries

Previous Next [GO]

2.5 Change Account Info

Allow the user to change the login/trading password (Fig.2. 25)

Fig. 2.25 Change A/C Info

Change Password

Old Password

New Password

Confirm Password

1. New password must consist of 8-12 numbers and alphabets.
2. New password cannot contain 3 same letters or numbers consecutively.
3. New password will be prohibited from re-using the last 2 previously used passwords.

The password policy according to OMS setting, more details please contact your account manager.

2.6 User Setting

Display Language, color style and Risk Disclaimer can be set according to user preference.

2.6.1 Language

User can change the language anytime (Fig. 2.26)

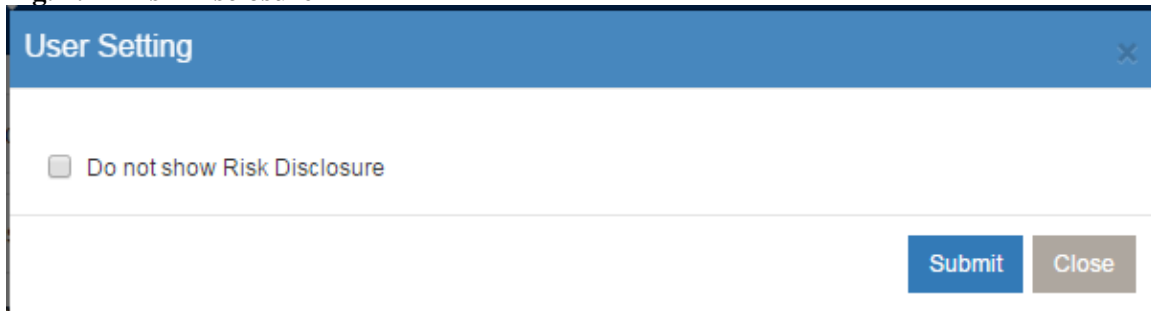
Fig. 2.26 language



2.6.2 Risk Disclosure

User can also click on <User Setting> to select whether to go through Risk Disclosure Page every time during login process.

Fig. 2.27 Risk Disclosure



2.6.3 Color Style

Fig. 2.28 Color Style

English
My Account

Client Name: AccountName
Client ID: 1005552-0001
Client Type: Cash
Last Login App: ITRADERELITE
Last Login Time: 2018-01-18 10:14:13

Light Blue
Dark
Light

Change Password
User Setting

Log Out

It allow user to change page color to different style, there are 3 color can be choose in “My Account”, Light Blue, Dark and Light.

For example, click Light, the web page will change as below:

Fig. 2.29 “Light” color

建银国际
CIB International

ITrader ELite
Trading
Assets
English
My Account

Order Ticket
Symbol
Price
Quantity
Limit Order
Day
Buy Clear Sell

Account Balance
Currency: USD
Ledge Balance: 10,000,000,000,009,400.00
Purchasing Power: 10,000,000,000,009,400.00

Portfolio
Market All Search...

Symbol	Symbol Name	Quantity	Pre Close	Unavailable Qty	Avg Price	Market Value(P Close)	Margin Ratio	Accept Value	P&L(P Close)
00388	HKEX	100	0		178.90	17,520.00	0%	N/A	-370.00
01288	AEC	3,000	0		3.840	9,630.00	0%	N/A	-1,890.00
01299	AIA	2,000	0		45.235	84,900.00	0%	N/A	-5,570.00
01398	ICBC	23,855	0		5.570	289,599.70	0%	N/A	156,727.35
01618	ICBC	1,000	0		1.55	0.00	0%	N/A	-1,550.00
01756	CRRC	1,000	0		7.200	90,000.00	0%	N/A	82,800.00
02468	CRRC	1,000	0		0.63	0.00	0%	N/A	-630.00

Showing 1 to 7 of 9 entries
Previous 1 2 Next 100

Order Book Cash Book Order History Transaction History






Status All Search...

Amend	Cancel	Date	Order Number	Buy/Sell	Symbol	Currency	Price	Avg Price	Quantity	Filled Qty	Queue Qty	Status	Source	Options	Remark
<input checked="" type="checkbox"/>	<input checked="" type="checkbox"/>	01-31 10:20:02	190131000001	Buy	00001	HKD	100.6	0	1,000	0	0	Reje	I		Market is closed
<input checked="" type="checkbox"/>	<input checked="" type="checkbox"/>	01-30 14:42:48	190130000001	Buy	00001	HKD	100.7	0	1,000	0	0	Reje	I		Market is closed

2.7 User Information

The account information will be displayed. (Fig. 2.30)






Fig. 2.30 User Information

<div>  English <div>  My Account </div> </div>	
Client Name:	AccountName
Client ID:	1005552-0001
Client Type:	Cash
Last Login App:	ITRADERELITE
Last Login Time:	2018-01-18 10:14:13
<div> <div>Light Blue</div> <div>Dark</div> <div>Light</div> </div>	
<div>  Change Password </div>	
<div>  User Setting </div>	
<div>  Log Out </div>	

2.8 Log Out

You can log out system by clicking “Log Out” from “My Account”. (Fig. 2.31)

Fig. 2.31 Log Out

<div>  English <div>  My Account </div> </div>	
Client Name:	AccountName
Client ID:	1005552-0001
Client Type:	Cash
Last Login App:	ITRADERELITE
Last Login Time:	2018-01-18 10:14:13
<div> <div>Light Blue</div> <div>Dark</div> <div>Light</div> </div>	
<div>  Change Password </div>	
<div>  User Setting </div>	
<div>  Log Out </div>	

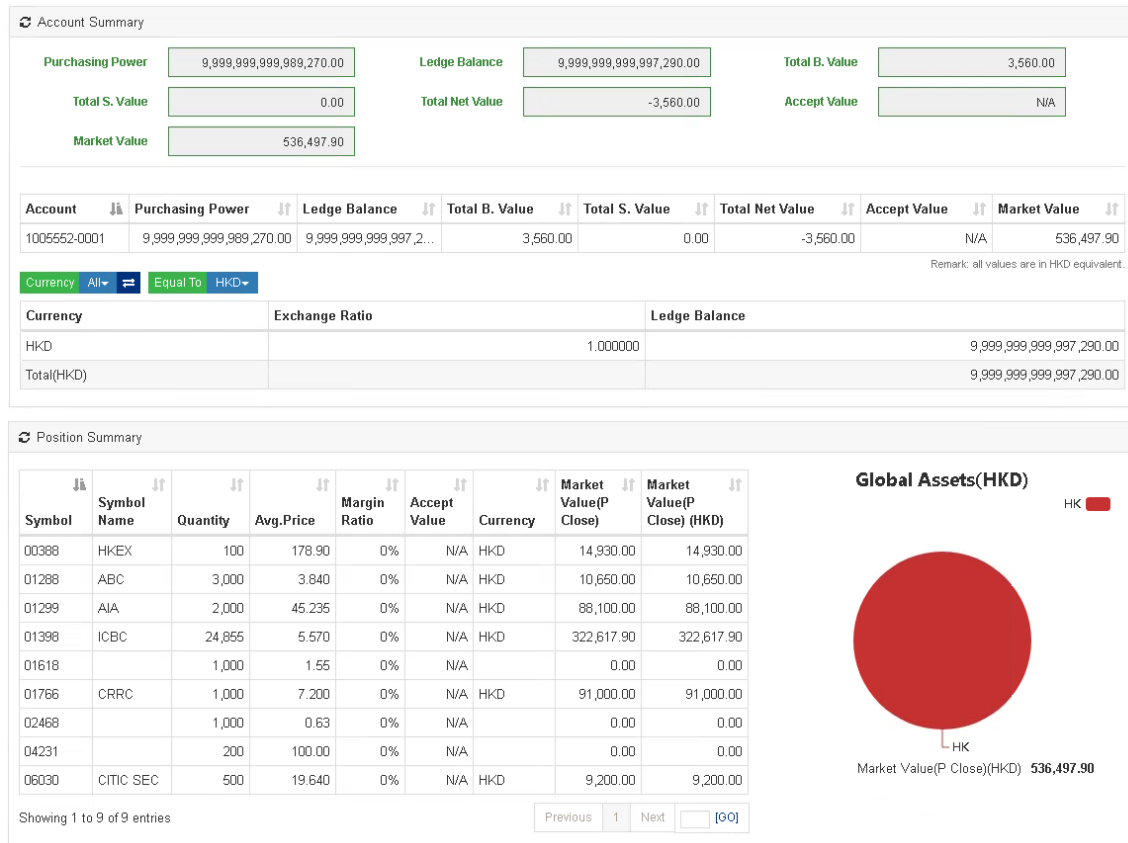
3. User Interface “Asset”

There are two sections included in page “Asset”: Account Summary and Position Summary.

Account Summary: account fund situation and profit.

Position Summary: Account position summary and distribution of assets

Fig. 2.32 Asset



4. Useful Tips

- Remember to **change your login password regularly** in order to protect yourself against others to login your account.
- Always **logout your trading screen** when you leave by using the logout button.

5. Level of Security

In order to protect the Internet Client, we have adopted different industrial standard and security requirements including data encryption, client password authentication and protection, server certificate, firewall protection.